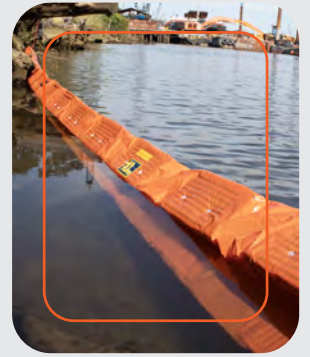
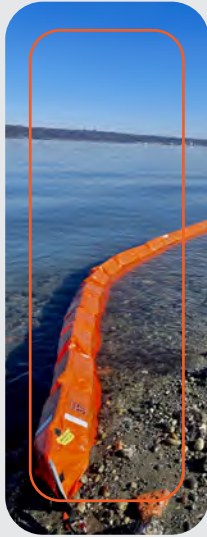


HARBO
INC.

MATERIAL CHEMICAL COMPATIBILITY CHART



LOW-DENSITY POLYETHYLENE (LDPE) & HIGH-DENSITY POLYETHYLENE (HDPE)

Acetic Acid 5%	Fluoride	Potassium Hydroxide Conc.
Allyl Alcohol	Formaldehyde 10% & 40%	Potassium Permanganate
Aluminum Salts	Glycerol	Propylene Glycol
Amino Acids	Hydrochloric Acid 5%, 20% & 35%	Salicylic Acid, Saturated
Ammonia	Hydrocyanic Acid	Silver Acetate
Ammonium Carbonate Saturated	Hydrofluoric Acid	Silver Nitrate
Ammonium Phosphate	Hydrofluoric Acid 4% & 48%	Sodium Carbonate
Ammonium Sulphate	Hydrogen Peroxide 3% & 30%	Sodium Chloride, Saturated
Boric Acid	Isobutyl Alcohol	Sodium Dichromate
Calcium Chloride	Isopropyl Alcohol	Sodium Hydroxide 50%
Calcium Hydroxide Saturated	Lactic Acid 10% & 90%	Sodium Nitrate
Chromic Acid 10% & 50%	Lead Acetate	Sodium Sulphate
Citric Acid 10%	Methanol	Sucrose
Dimethylsulfoxide	N-Butyl Alcohol	Sulfuric Acid 6%, 20% & 60%
Ethanol 95%	N-Octane	Tannic Acid
Ethyl Acetate	Phosphoric Acid 10%	Urea
Ethylene Glycol	Potassium Carbonate	Zinc Chloride
Ferric chloride	Potassium Hydroxide 5%	

316 STAINLESS STEEL

Acetic Acid 20%
Acetone
Ammonia, Anhydrous
Ammonium Hydroxide 10%
Ammyl Acetate
Beer
Carbon Monoxide
Chromic Acid 10%
Citric Acid 5%
Formic Acid - Anhydrous
Hydrogen
Hydrogen Sulfide, Dry
Lactic Acid 10%
Mercury
Nitric Acid 70%
Phosphoric Acid 20%
Sodium Chloride
Sulfuric Acid 50%
Toluene
Turpentine
Water, Demineralized
AND MORE...

Lightweight System, Heavy Duty Containment
— Engineered for Chemical Resistance.

US: 1-832-234-9543
EU: +44 740 101 8953

sales@harbo-technologies.com
www.harboinc.com



EPE FOAM

Acetic Acid 5%
 Acetaldehyde
 Acetic Acid 10% & 100% (glacial)
 Acetic Anhydride
 Acetone
 Aromatic
 Acrylonitrile
 Allyl Alcohol 96%
 Aluminum Chloride
 Alum
 Ammonia
 Ammonia, Gaseous & Salts
 Amyl Acetate
 Aniline
 Antimony Trichloride
 Beer
 Beeswax
 Benzaldehyde
 Benzenesulphonic Acid
 Benzoic Acid
 Borax
 Boric Acid
 Brine Saturated
 Butanol
 Butoxyl (Methoxy Butyl Acetate)
 Butyl Acetate
 Butyle Glycol
 Butyric Acid
 Calcium Carbonate
 Calcium Chloride
 Calcium Hypochlorite
 Calcium Nitrate 50%
 Camphor
 Carbonic Acid
 Castor Oil
 Caustic Potash
 Caustic Soda
 Chloral Hydrate
 Chloroacetic Acid (mono)
 Chloroethanol
 Chromic Acid 80%
 Citric Acid
 Clophen (A50 & A60)
 Coconut Oil
 Common Salts Aqueous, Satur.
 Copper Salts
 Corn oil
 Creosote
 Cresol
 Cyclohexane
 Cyclohexanol
 Cyclohexanone
 Detergenets, Synthetic
 Dibutyl Ether
 Dibutyl Phthalate
 Dichloroacetic Acid 50% & 100%
 Dichloroacetic Acid, Methyl Ester
 Diesel Fuel Oil
 Diisobutyl Ketone
 Dimethylamine

Dimethylamine
 Dimethyl Formamide
 Dimethyl Sulphoxide
 Dioxane
 Emulsifiers
 Epichlorhydrin
 Esters, Aliphatic
 Ethanol 96%
 Ethyl Acetate
 Ethylenediaminetetraacetic Acid
 Ethylene Glycol
 Fatty Acids (C6)
 Ferric Chloride
 Fluosilicic Acid
 Formaldehyde (40% Aqueous)
 Formic Acid
 Fruit Juices
 Fruit Pulp
 Furfuryl Alcohol
 Gasoline
 Gelatine
 Glycerine
 Glycol Concentrated
 Glycolic Acid 55% & 70%
 Glycolic Acid, Butyl Ester
 Heating oil
 Hydraulic Fluid
 Hydrazine Hydrate
 Hydrobromic Acid 50%
 Hydrochloric Acid Conc.
 Hydrochloric Acid Gas
 Hydrocyanic Acid
 Hydrofluoric Acid 40% & 70%
 Hydrogen Peroxide 30% & 90%
 Hydrogen Sulphide
 Hydrosuphite 10%, Aqueous
 Iodine Tincture, DAB 6
 Isooctane
 Isopropanol
 Kerosene
 Ketones
 Lactic Acid
 Linseed Oil
 Magnesium Chloride
 Maleic Acid & 50%
 Menthol
 Mercury
 Mercuric Chloride
 Methanol
 Methoxybutanol
 Methyl Ethyl Ketone
 Methyl Glycol
 Mineral Oils
 Monochloroacetic Acid
 Monochloroacetic Acid, Ethyl Ester
 Morpholine
 Motor Oils, HD Oil
 Naphtha
 Naphthalene
 Nickel Salts

Nitric Acid 25%
 Nitrobenzene
 O-Nitrotoluene
 Nitrous Gases
 Oils (Vegetable & Animal)
 Oleic Acid, Concentrated
 Oxalic Acid 50%
 Perchloric Acid 20%, 50% & 70%
 Petrol
 Petrol/Benzene Mixture
 Petroleum Ether
 Phenol
 Phosphates
 Phosphoric Acid 25%, 50% & 95%
 Phosphorus Oxychloride
 Phosphorus Pentoxide
 Phosphorus Trichloride
 Photographic Developers
 Phtalic Acid 50%
 Polyglycols Glycolic Acid,
 Potassium Chloride
 Potassium Bichromate 40%
 Potassium Cyanide
 Potassium Permanganate
 Potassium Hydroxide 30%
 Propionic Acid 50% & 100%
 Propylene Glycol
 Pyridine
 Sea Water
 Silicic Acid
 Silicone Oil
 Silver Nitrate
 Sodium Benzoate
 Sodium Borate
 Sodium Carbonate
 Sodium Chloride
 Sodium Chlorite 50%
 Sodium (Dodecylbenzenesulphonate)
 Sodium Hydroxide 30%
 Sodium Hypochlorite, Conc.
 Sodium Nitrate
 Sodium Peroxide 10%
 Sodium Sulphide
 Sodium Thiosulphate
 Speraceti
 Starch
 Stearic Acid
 Succinic Acid 50%
 Sulphates
 Sulphur
 Sulphur Dioxide (dry & moist)
 Sulphuric Acid 10%, 50% & 98%
 Sulphurous Acid
 Sulphuryl Chloride
 Tallow
 Tannic Acid 10%
 Tartatic Acid
 Transformer Oil
 Tributyl Phosphate
 Trichloroacetic Acid 50% & 100%

Tricresyl Phosphate
 Triethanolamine
 Urea 33%
 Yeast
 Zinc Chloride

ANODIZED ALUMINUM

Acetone
 Ammonia, Anhydrous
 Ammyl Acetate
 Beer
 Boric Acid Solutions
 Carbon Dioxide
 Carbon Monoxide
 Chromic Acid 10%
 Citric Acid 5%
 Ethyl Acetate
 Ethyl Alcohol
 Ethylene Glycol
 Formic Acid - Anhydrous
 Hydrogen
 Hydrogen Peroxide, Dillute
 Hydrogen Sulfide, Dry
 Toluene
 Turpentine
 Water, Demineralized
 Sea Water

NYLON

Acetaldehyde
 Acetone
 Alcohols (Diacetone, Hexyl, Octyl)
 Ammonia 10%
 Ammonium Acetate
 Ammonium Hydroxide
 Barium Chloride
 Borax (Sodium Borate)
 Carbon Bisulfide
 Chloroform
 Diesel Fuel
 Ethanolamine
 Ether
 Ethylene Glycol
 Formaldehyde 40%
 Glucose
 Kerosene
 Methane
 Methyl Acetone
 Methyl Isopropyl Ketone (MIPK)
 Sodium Bicarbonate
 Sodium Hydroxide (Lye)
 Sodium Sulfate
 Urea
 Vinegar (Acetic Acid solution)
 AND MORE...



HARBO
 INC.

**STOP SPILLS BEFORE
 THEY SPREAD.**