



HARBO
INC.



BRIDGING THE GAP

Between detection and full-scale response.



About HARBO Inc.

Protecting What Matters.

Harbo Inc. is reshaping how the world responds to environmental emergencies. Founded in 2013, with a mission to make spill containment faster, simpler, and more effective, HARBO pioneered portable response systems designed to stop spills before they become disasters.

In 2026, HARBO expanded its focus beyond spill response to deliver a broader portfolio of environmental solutions built for evolving global challenges. This evolution reflects the company's commitment to efficient, safer environmental protection technologies.

What began as a bold idea, making containment available anywhere, anytime, has evolved into a global movement for smarter, and more adaptable environmental protection.

2013
Founded

2018
First Product
Launch

2021
Global
Growth

2026
Over 5k Units
in Circulation

Our Mission In Action.

We empower responders to act quick, prevent environmental disasters, and protect what matters most. Our environmental solutions deliver rapid, effective response capabilities that help contain incidents early and reduce impact across any environment.

At the 17th Annual Energy & Clean Technology Venture Forum hosted by Rice University, Harbo Technologies was recognized as one of the *Top 10 Most Promising Energy and Clean Tech Companies*, selected from over 180 global applicants.

Awards & Recognition.

Where We Make a Difference

Serving All Industries.

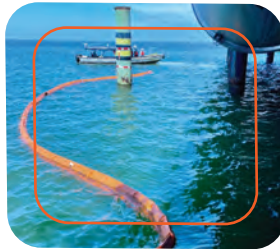


Page 7

Autonomous Response



Asset Protection



Aquaculture



Chemical Response



Debris Control



Natural Disasters



Ports, Harbors & Marinas



Spill Response



Wind Farms



Photographed at OHMSETT Facility

Proven at OHMSETT - 2x

24-HR

Continuous Test with No Losses

1.5t

of Oil Contained

7.62 cm / 3 in

Oil Depth

5kn

Fast-Water Certified (WRI)

2m / 6.5 ft

Waves in Tank

Resistant to **55+** Chemicals

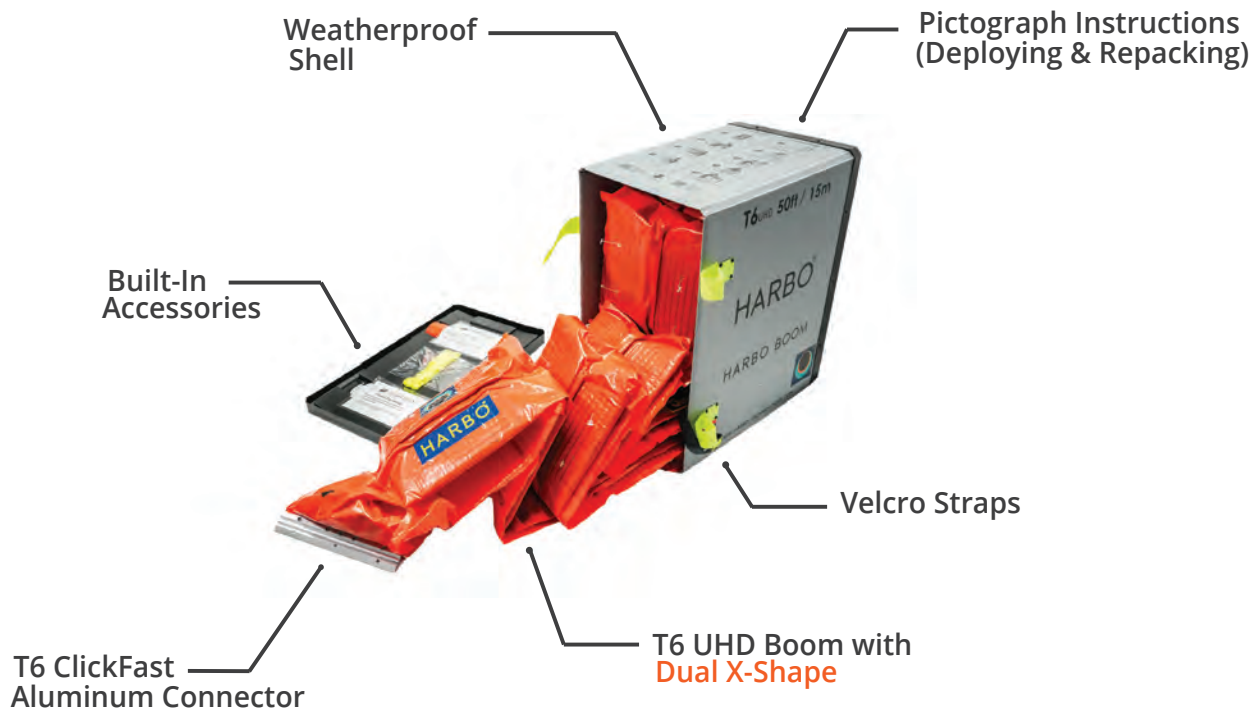
Environmental Solutions

Smarter technologies for faster environmental response.

As environmental and operational challenges continue to evolve, so does HARBO. Our expanding product portfolio brings together innovative technologies that support spill response, autonomous operations, debris management, environmental monitoring, and critical infrastructure protection. By combining rapid deployment systems with next-generation environmental solutions, HARBO is helping organizations respond earlier, operate more efficiently, and protect what matters most.

THE BOOM.

- Length: 15 m / 50 ft
- Weight: 1081 gr/m / 11.63 oz/ft
- Height: 34 cm / 13.4 in
- Freeboard: 14 cm / 5.5 in
- Draft/Skirt: 20 cm / 8 in
- Dual X-Shape
- Tension: 1.5 Tensile Tons
- Handles: Every 5 m / 16 ft
- Connector: T6 ClickFast Aluminum



Performance up to **1.5 tons** + **-55 to 55°C** and more...
Tensile Strength Temperature Range

CARTRIDGE.

- **Packaging:** Weatherproof Plastic Shell
- **Length:** 15 m / 50 ft
- **Weight:** 21.45 kg / 47.30 lbs
- **Dimensions:** 60 x 40 x 70 cm / 2' x 1'4" x 2'3"
**Checked Baggage Compliant*
- **Velcro Opening (No Tools Required)**
- **Accessories**
 - Ground Tarp
 - Tow Bridle
 - Heavy-Duty Carabiner
 - 10 m / 33 ft Rope
 - Contamination Liner
 - Handles x3



SPILL TRAVELER.

- **Packaging:** Weatherproof Bag
- **Length:** 10 m / 33 ft
- **Weight:** 16 kg / 36 lbs
- **Dimensions:** 72 x 40 x 45 cm / 2'4" x 1'4" x 1'6"
**Checked Baggage Compliant*
- **Zipper Opening (No Tools Required)**
- **Accessories**
 - Ground Tarp
 - Tow Bridle
 - Heavy-Duty Carabiner
 - 10 m / 33 ft Rope
 - Contamination Liner
 - Handles x2
 - Compact SmooshKit
 - PPE (gloves, tyvek suit, glasses)

SPILLKIT PRO.

- **Packaging:** Weatherproof Plastic Container
- **Length:** 15 m / 50 ft
- **Weight:** 33 kg / 72 lbs
- **Dimensions:** 107 x 61 x 61 cm / 3'6" x 2' x 2'
- **Metal Clasp Opening (No Tools Required)**
- **Accessories**
 - Ground Tarp
 - Tow Bridle
 - Heavy-Duty Carabiner
 - 10 m / 33 ft Rope
 - Contamination Liner
 - Handles x3
 - SmooshKit x1
 - 3 m / 10 ft SpillBoa x2
 - 8 m / 25 ft SpillBoa x1
 - 2.26 kg / 5 lbs of Granular
 - PPE (gloves, tyvek suit, glasses)



Autonomous Response

Advancing the Future.

HARBO is partnering with leading autonomous response companies including SHIFT Coastal Technologies, SHECO, and IADYS to help redefine how environmental incidents are managed. By integrating autonomous surface vessels, smart deployment systems, and connected response technologies, we are working toward a faster, safer, and more efficient future for spill response and environmental protection.



OCEANSLED SERIES.

OceanSled advanced uncrewed surface vessels (USVs) enhance maritime security, environmental monitoring, and operational awareness through real-time data, voice, and video transmission. A platform designed for efficient, improved situational awareness in dynamic maritime environments.

TRANSPORTER.

Features

- A long range antennae
- Dual thrusters
- Tilt-stabilized FPV camera
- LiFePo4 battery
- Handheld controller with FPV videolink
- Tow 120 m / 400 ft+ of HARBO Boom



Transporter

EXPLORER.

Features

- Advanced sensor suite
- Autonomous navigation
- Low detectability
- 500 kg payload
- Real-time data capable
- 206kgf Bollard Pull Towing Capacity



Explorer

IADYS

JELLYFISHBOT LITE.

The Jellyfishbot Lite is designed to tow Harbo's ultra-light booms. An efficient, single-operator spill containment and worksite protection system designed for marinas, ports, and industrial waterways.

Lite Base Pack

- Jellyfishbot Lite
- Remote Control
- Lights
- Harbo Booms x4 (15 m / 50 ft each)

Lite Extended Pack

- Jellyfishbot Lite
- Remote Control
- Lights
- Harbo Booms x8 (15 m / 50 ft each)



ARK SERIES.

SHECO's robotics platform combines oil recovery, autonomous boom deployment and debris collection to rapidly respond to marine incidents. Designed for ports, harbors, canals, and coastal waters, the system enables faster, safer, and more efficient spill response without manual deployment.



MODULE-M: Oil Recovery

- Recovery Rate: 30,000 L/H (3 m³) / 7,925 GPH
- Oil Separation: Capable of discharging clean water with a contamination level of ≤2ppm

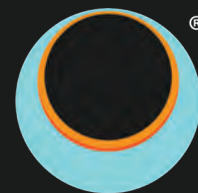
MODULE-F: Boom Deployment

- B-Type Oil Fence (with 20 cm / 8 in skirt): up to 60 m / 196 ft 10 in using 2 robots - 240 kg
- Oil-Absorption Boom: up to 80 m / 262 ft 6 in

MODULE-C: Debris Collection

- Waste Collection Capacity: 500 L (net volume) / 132 gal
- Remote-Control Ranges: 350-400 m / 1,148-1,312 ft





HARBO
INC.



Get In Touch :



EU: +44 740 101 8953
US: +1 832 234 9543



sales@harbo-technologies.com
info@harbo-technologies.com



www.harboinc.com

DISTRIBUTOR INFORMATION:

**STOP SPILLS BEFORE
THEY SPREAD.**



© 2026 HARBO INC. All rights reserved.